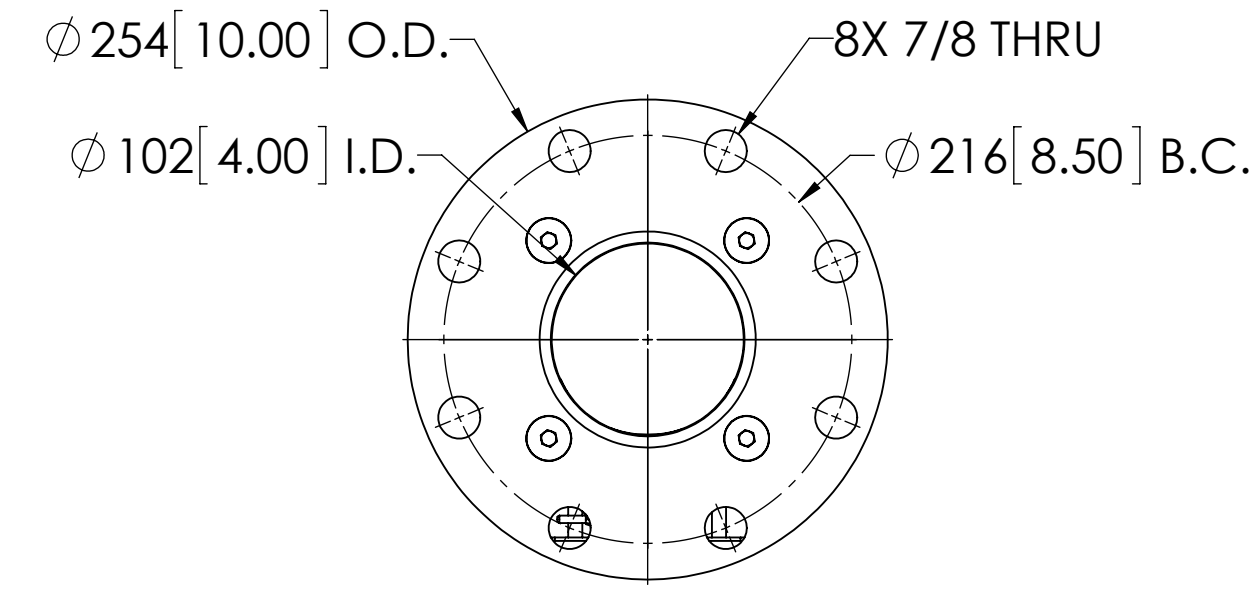
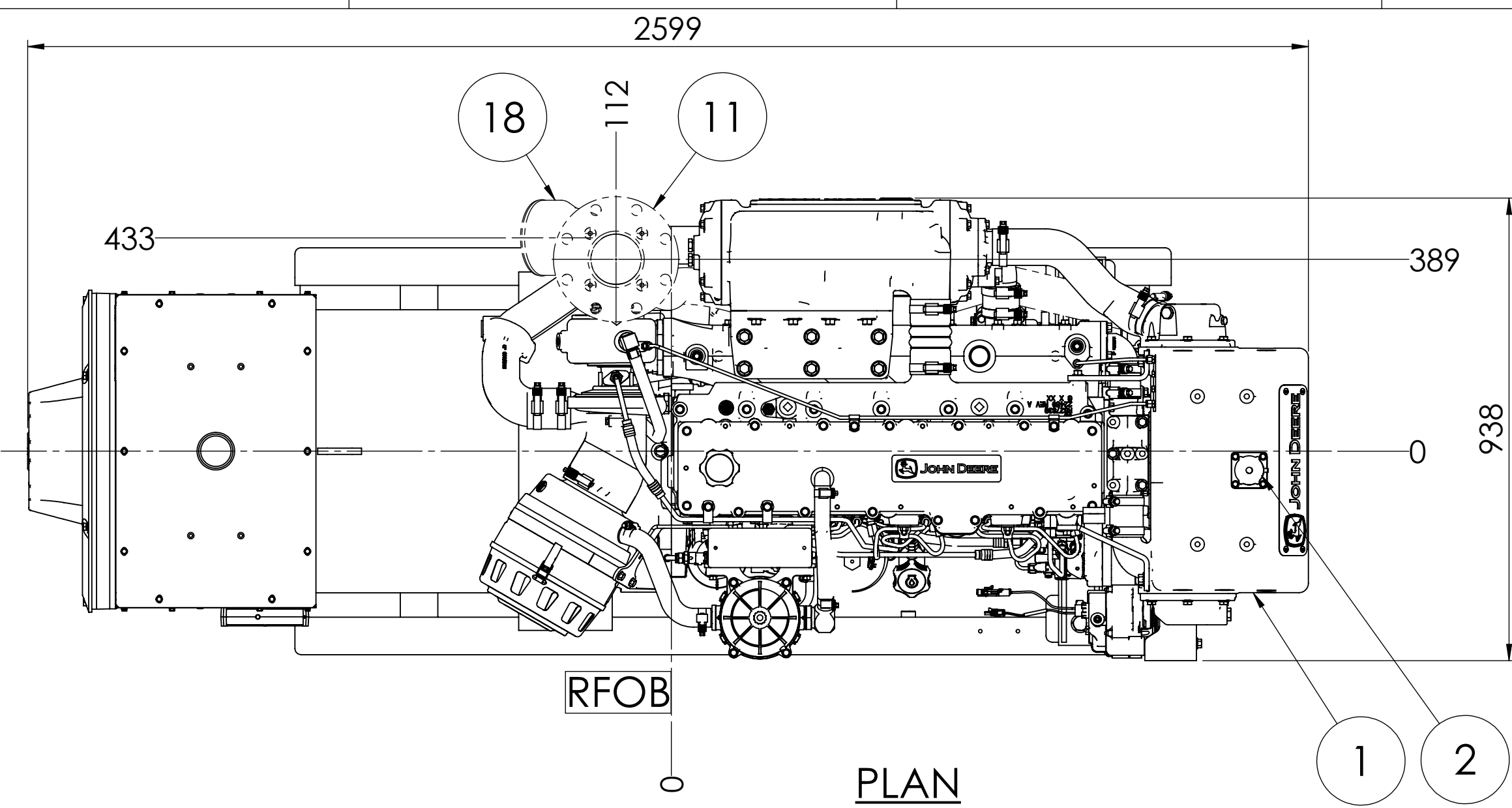


MODELS	DESCRIPTION
M250C13.11	250kW@1800RPM 3PH H.E.
M250C13.51	200kW@1500RPM 3PH H.E.

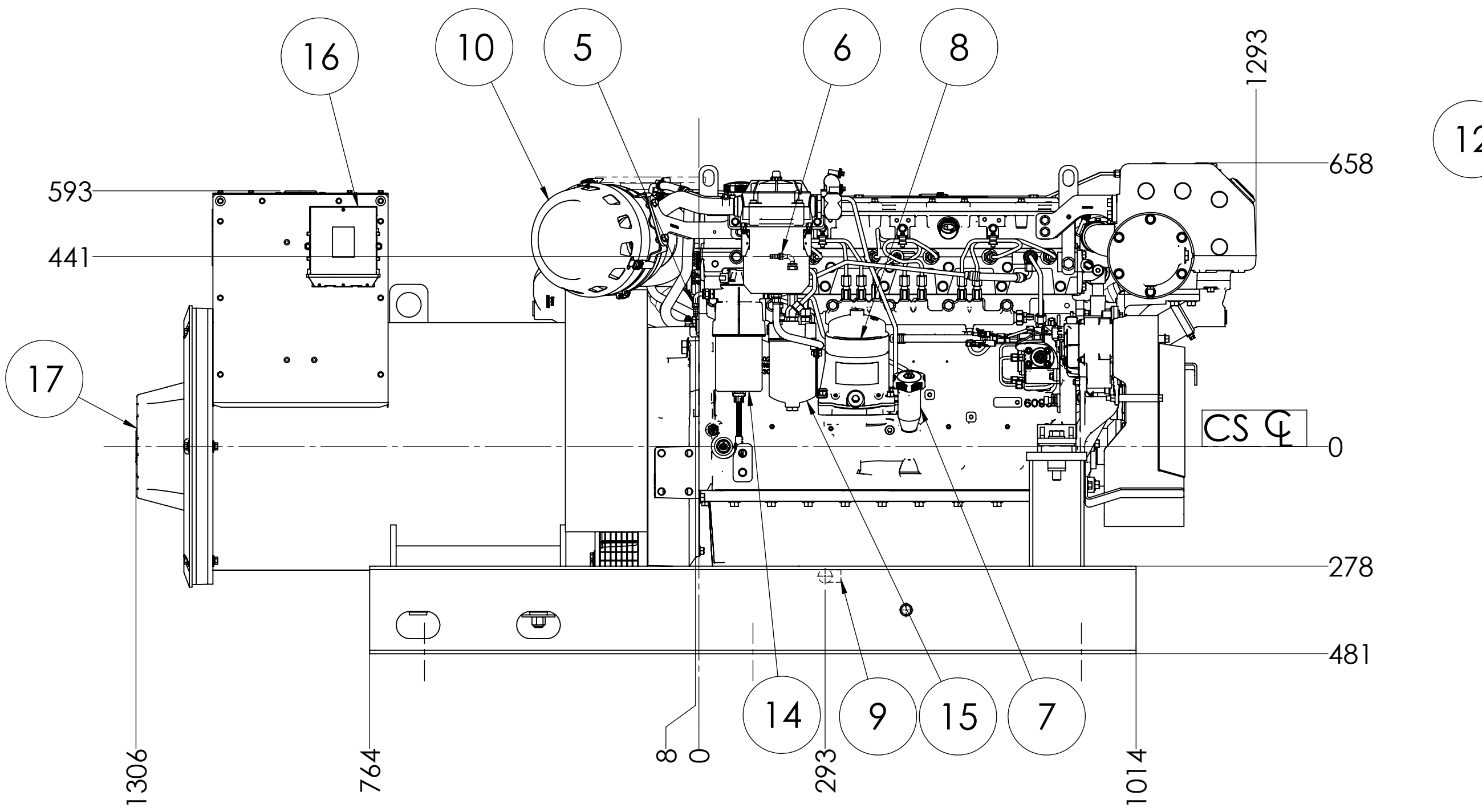
ITEM	DESCRIPTION
1	EXPANSION TANK
2	COOLANT FILL
3	SEAWATER INLET - ϕ 2.5 H.B.
4	SEAWATER OUTLET - ϕ 2.5 H.B. - DRY EXHAUST
5	FUEL SUPPLY - ϕ 3/8 H.B.
6	FUEL RETURN - ϕ 3/8 H.B.
7	CRANKCASE OIL FILLER / DIPSTICK
8	CRANKCASE OIL FILTER
9	ENGINE OIL DRAIN VALVE - ϕ 7/8-14
10	AIR INLET FILTER
11	OPTIONAL DRY EXHAUST ELBOW - SEE DETAIL
12	CLOSED CRANKCASE VENTILATION SYSTEM
13	ELECTRIC STARTER
14	PRIMARY FUEL FILTER
15	FINAL FUEL FILTER
16	ENGINE CONTROL UNIT
17	PMG
18	OPTIONAL WET EXHAUST ELBOW - ϕ 6.0 H.B.



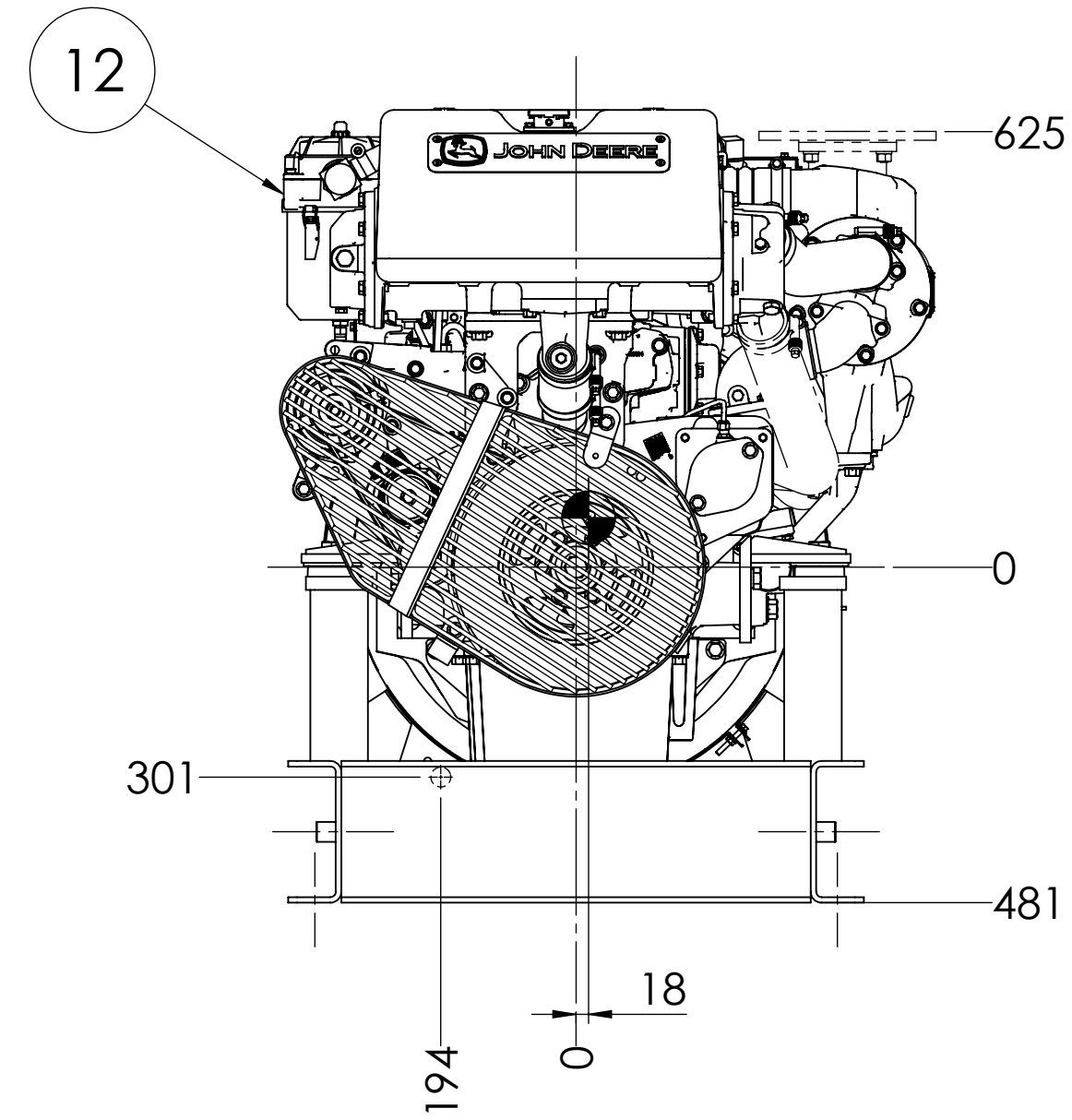
OPTIONAL DRY EXHAUST ELBOW
SCALE: 1:4



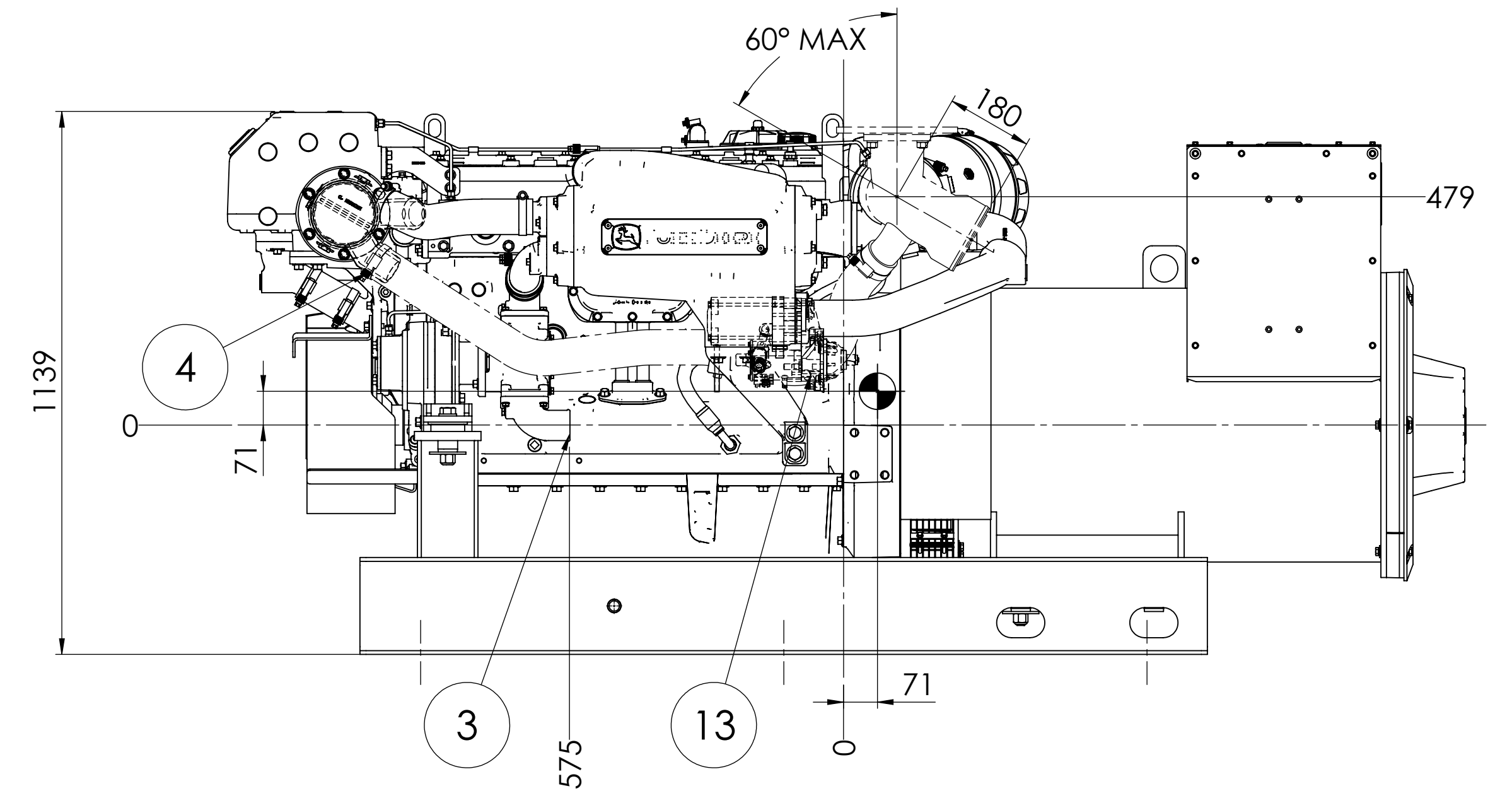
PLAN



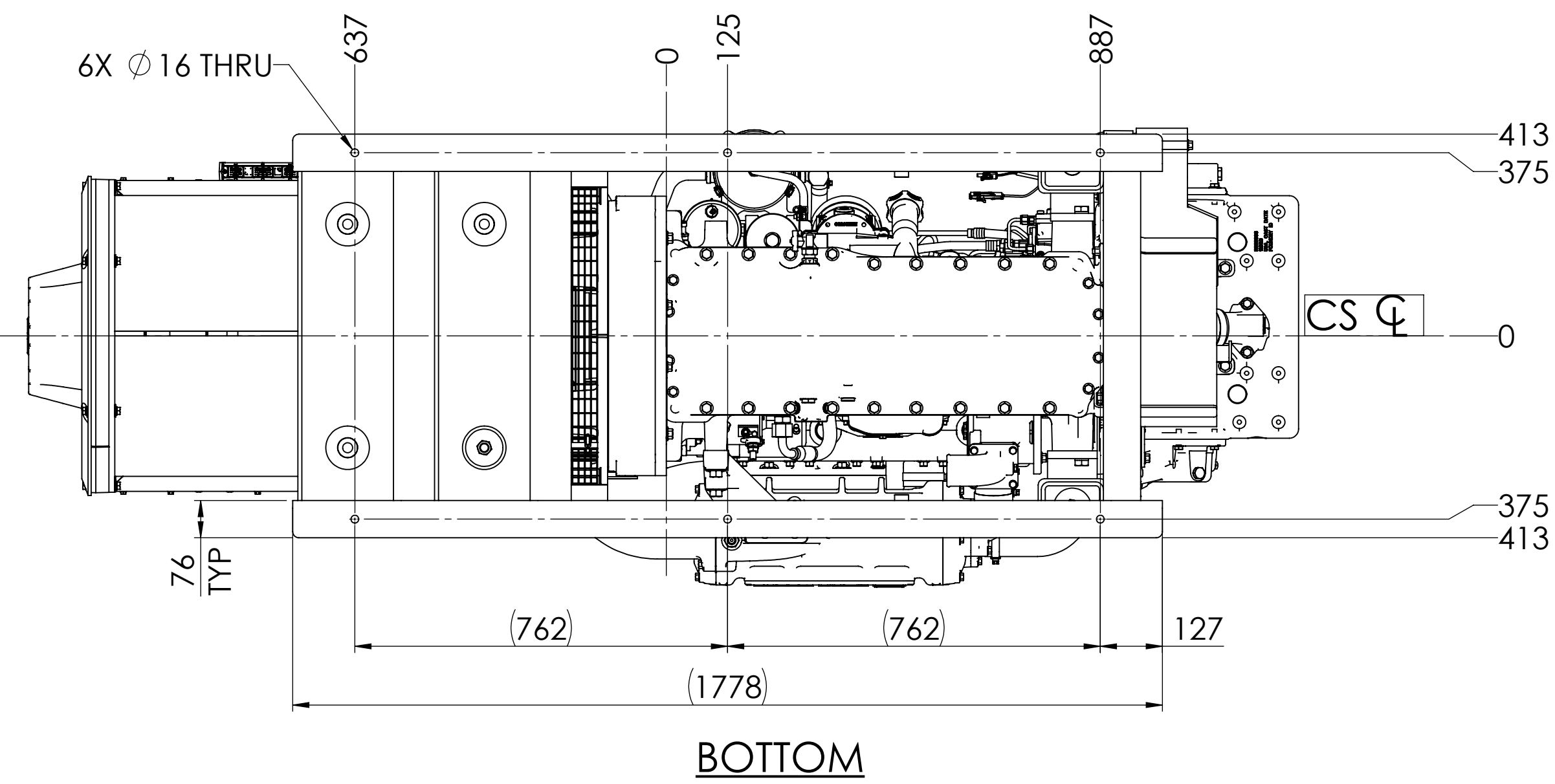
SERVICE SIDE



FRONT



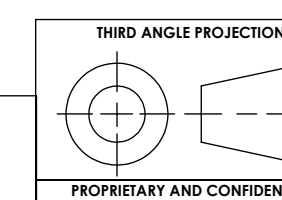
NON-SERVICE SIDE



BOTTOM

ESTIMATED DRY WT.: 2223 kg [4900 LBS.]

THE DIMENSIONS ON THIS DRAWING ARE SUBJECT TO CHANGE. PLEASE CONTACT NLI TO BE SURE YOU HAVE THE MOST CURRENT REVISION.



UNLESS OTHERWISE SPECIFIED:		NAME	DATE
DIMENSIONS ARE IN MILLIMETERS		MG	04/29/16
TOLERANCES:		CHECKED	TH
ANGULAR: MACH \pm 0.5°		ENG APPR.	
NO DECIMALS = \pm 0.5		MEG APPR.	
ONE DECIMAL = \pm 0.5		Q.A.	
INTERPRET GEOMETRIC TOLERANCING PER ASME Y14.5M		COMMENTS:	
MATERIAL:			
FINISH:			
DO NOT SCALE			

		4420 14th AVE. N.W. Seattle, WA 98107 (206) 789-3880 www.northern-lights.com	
INSTALLATION DIMENSIONS M250C13 H.E.			
SIZE	PART NO.	DWG. NO.	REV
D		D-4922	
SCALE: 1:10	WEIGHT:	SHEET 1 OF 1	

REV D-4922